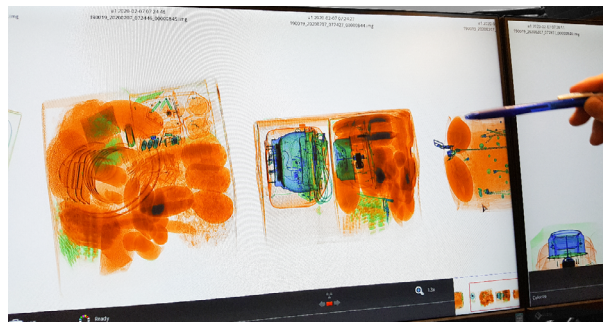




What is the purpose of regulating import of seeds, plants and living plant material?

The phytosanitary requirements protect our crops, trees, gardens and countryside against pests and diseases. More than 150 pests and diseases can seriously damage crops and plants in Denmark - and in the EU as such. They are eradicated immediately if found.

Most pests and diseases are not visible to the naked eye. If you import seeds, plants or living plant material without a valid certificate or permit, you risk introducing harmful pests and diseases.



Packages from countries outside the EU may be scanned.

What happens, if you import seeds, plants or living plant material from a country outside the EU?

The Danish Customs Agency inspect traveler's luggage, when they arrive from countries outside the EU.

If you import seeds, plants or living plant material without the necessary documentation, it will be intercepted by The Danish Customs Agency and handed over to the Danish Agricultural Agency.

If you import CITES plant species (such as most orchids and cacti) without the necessary CITES permits, The Danish Agricultural Agency will inform the Police, and you may be sanctioned.

Questions?

Read more about plant health and find the requirements at <https://eng.lbst.dk> or contact The Danish Agricultural Agency at +45 33958000, mail@lbst.dk.



The Ministry of Food, Agriculture and Fisheries of Denmark
Danish Agricultural Agency
Plants & Biosecurity
Nyropsgade 30, 1780 Copenhagen V
Tel: +45 3395 8000 | Planter&Biosikkerhed@lbst.dk
Plantesundhed.dk



Ministry of Food, Agriculture
and Fisheries of Denmark
Danish Agricultural Agency

You are not allowed to import seeds, plants or living plant material into Denmark

Read about the requirements and avoid being sanctioned











Take home messages on importing seeds, plants or living plant material

- You are not allowed to import seeds, plants and living plant material from countries outside the EU without a phytosanitary certificate. However, 5 tropical fruits do not require a phytosanitary certificate for import into Denmark: pineapple, coconut, durian, bananas, dates.
- Specific rules (CITES trade rules) apply to endangered plant species, covering e.g. most orchid and cacti species. You must apply for a permit to import specimens of plants on the CITES list.
- If you violate the rules, you risk being sanctioned.

What is “seeds, plants and living plant material”?

-  Fruits
-  Vegetables
-  Cut flowers
-  All plants for planting
-  Seeds, other than those not intended for planting
-  All other living plant material and soil



What is required for importing seeds, plants or living plant material from a country outside the EU?

Import of seeds, plants or living plant material is covered by phytosanitary requirements – with only the few exemptions mentioned. If you plan to import seeds, plants or living plant material, you must:

- Check if your goods require a phytosanitary certificate.
- Check if the plant should be notified to the Danish Agricultural Agency for import control. All living plants, for example potted plants and cuttings, must be notified.
- If so, apply for a phytosanitary certificate at the plant health authority in the country you are travelling from (the exporting country).
- Check if your import needs a permit under the CITES trade rules. CITES rules applies for most orchids and cacti and many other plants.
- Link to the Danish Agricultural Agency’s website on import rules for private persons via the QR code:



What is a phytosanitary certificate?

- A phytosanitary certificate is an official document verifying that the product was inspected by the exporting country’s authority and found to comply with the importing country’s phytosanitary requirements.
- The phytosanitary certificate is issued by the plant health authority in the exporting country.
- Find information about the plant health authority in another country at www.ippc.int